

2022

PRIMAVERA VERANO
PRINTEMPS ÉTÉ
SPRING SUMMER
FRÜHJAHR SOMMER
LENTE ZOMER
PRIMAVERA ESTATE



Katifa®

N.109
CASUAL



C-807B SWEET COCOON 80+88

185 g 4 



N.109 CASUAL



C-801 ALABAMA 72

223 g. 5



C-804 MISSOURI 57+5

474 g 10





C-408 SEACELL-COTTON 119-100-115

655 g 14 



C-405A SEACELL-COTTON119+100
C-405B SEACELL-COTTON 119

263 g 6 
184 g 4 



KP-803 LINO 100% 31+8+1

462 g 10 



C-807A SWEET COCOON 80

C-807B SWEET COCOON 80+88

Portada/Page de couverture/Cover Page/ Titelblatt/
Voorpagina/Copertina



135 g 3 

185 g 4 



N.109 CASUAL



KP-800 COTTON 100% 1+5+61+64 665 g. 14



C-203 TENCEL-COTTON 1+5+4 648 g 13



C-400 PANAMA 1+5

170 g 4 



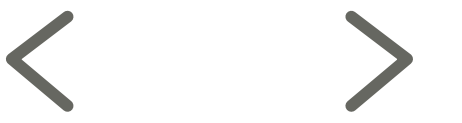
C-810 FAIR COTTON MARINER 200

442 g 3 





N.109 CASUAL



C-204 SUMMER COMFORT 78+60+74 495 g. 10



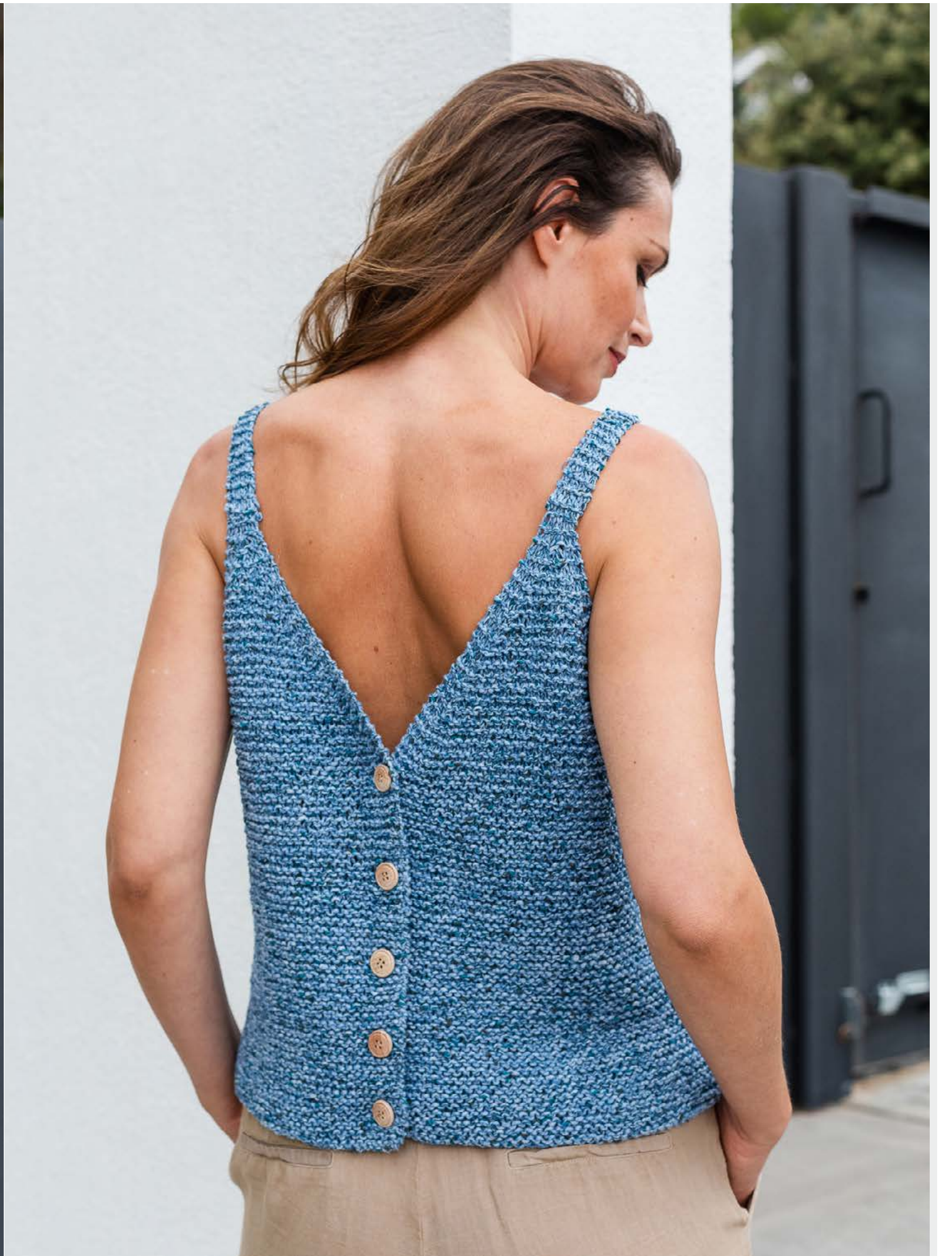
C-209 EASY KNIT COTTON 4 412 g 5



C-17 LINO 100% 34 480 g 10 



C-806 YUCATAN 88



200 g 4 

Katifa

N.109 CASUAL



C-20 MEDITERRANEA 403

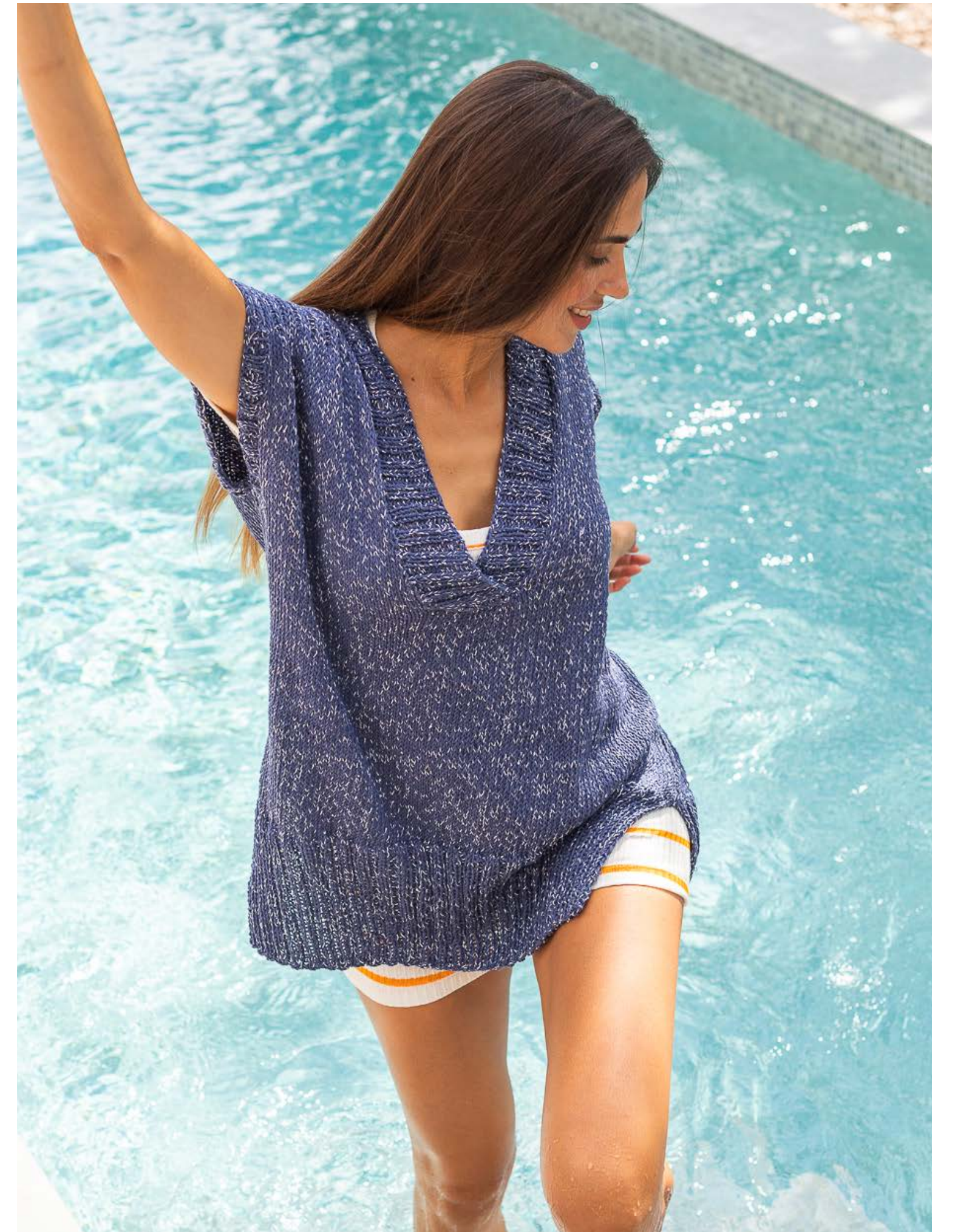
550 g 6 



C-702 GATSBY 57



525 g 11



C-23 MILOS 92

463 g 10



N.109 CASUAL



C-407 EASY KNIT COTTON 11

979 g. 10



C-802 RE-TAPE CRAFT 305

331 g 7



N.109 CASUAL



C-602 BRISA 36

541 g 11



KP-401 BRISA 67

515 g 11



N.109 CASUAL



C-08 WASHI 139+140+141 682 g 7



C-09 WASHI 139+140+141 349 g 4



C-201 LINEN 29

348 g 7 



N.109 CASUAL



C-13 RE-TAPE CRAFT 303 + ALABAMA 3

642 g 10 + 3

Katifa

N.109 CASUAL



KP-402 FAIR COTTON MARINER 202

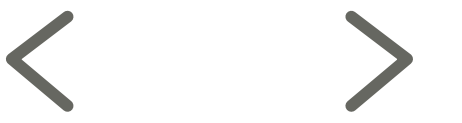
397 g 2 



- | | | |
|-------|---------------------|-----------|
| C-205 | BIG RIBBON 11 | 2000 g 10 |
| C-206 | COTTON 100% 1-15-34 | 1254 g 26 |
| C-207 | COTTON 100% 1-34 | 348 g 7 |
| C-208 | COTTON 100% 1-15 | 336 g 7 |



N.109 CASUAL



KP-406 YUCATAN 84

633 g 13



C-12 FAIR COTTON 49

354 g 8



N.109 CASUAL



KP-805 TENCEL-COTTON 34

478 g 10 



N.109 CASUAL



C-600 MENFIS COLOR 116

458 g 5



C-03 COTTON 100% 65

406 g 9



KP-601 ALABAMA 11-47

543 g 11 



C-05 SEACELL-COTTON 112

322 g 7 



C-603 MIMOSA 305

390 g 2 



C-604 TENCEL-COTTON 21

406 g 9 



N.109 CASUAL



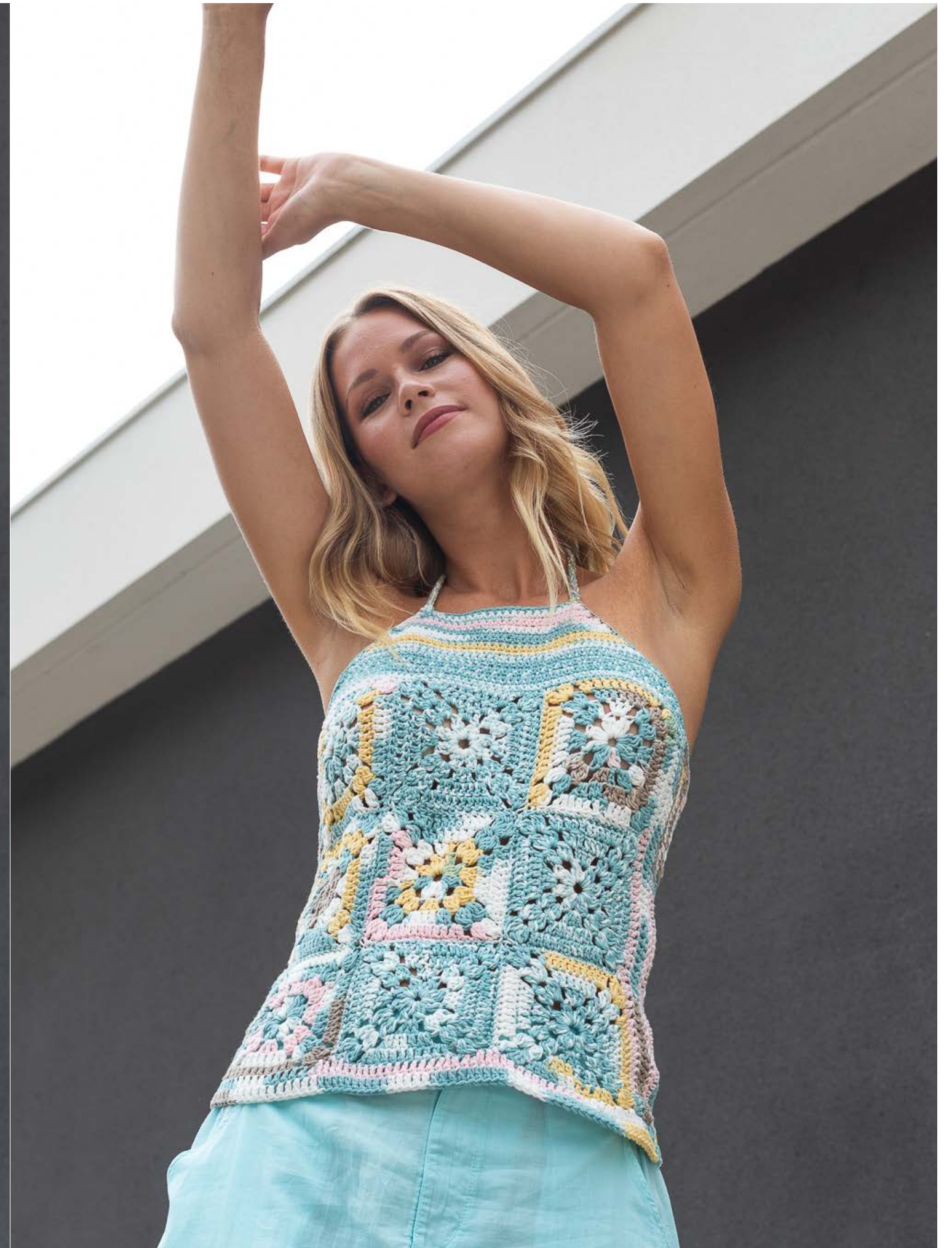
C-403 FAIR COTTON 16

336 g 7



C-703 MEDITERRANEA 407

211 g 3

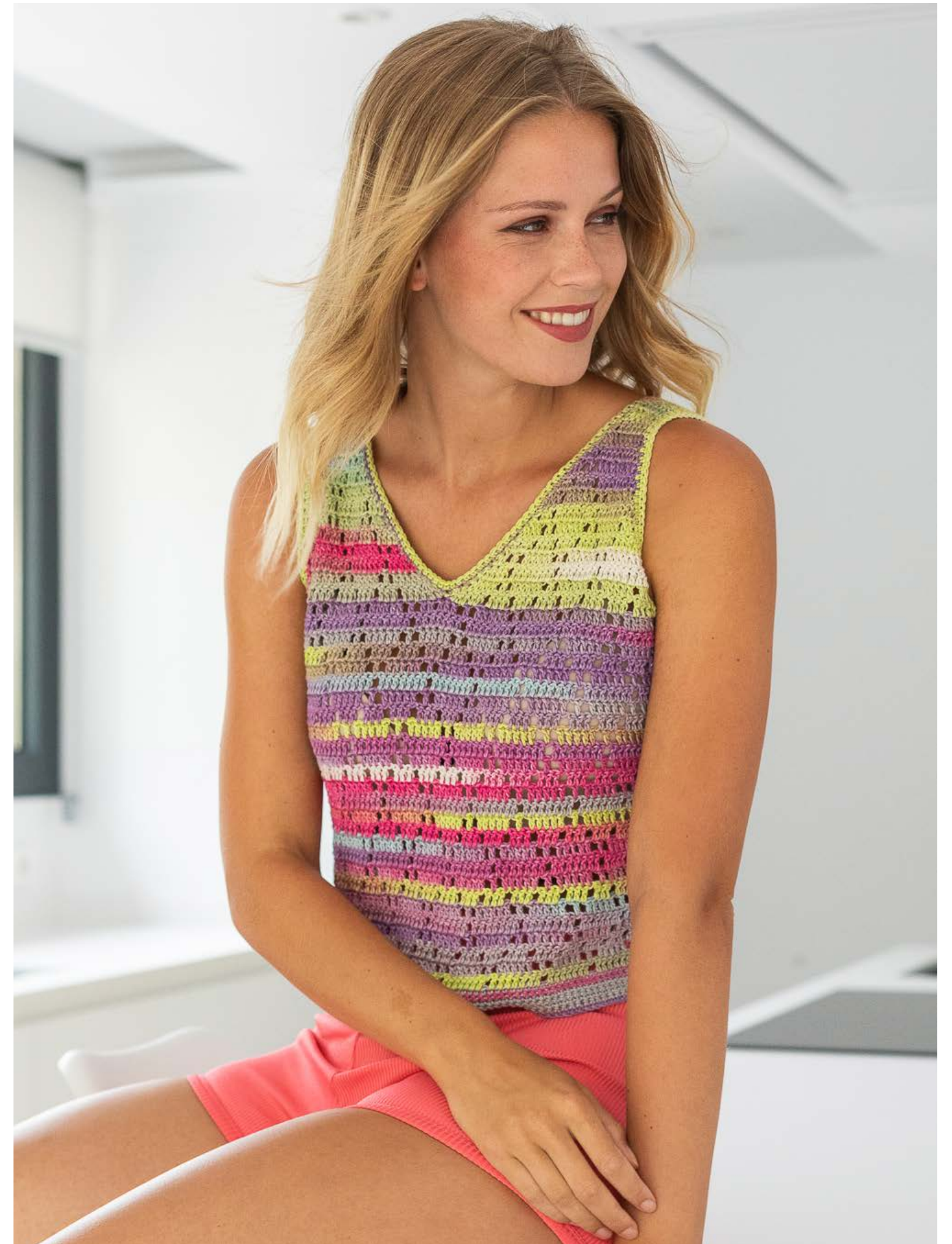




C-06 SUMMER COMFORT 71 534 g 11



C-812 SUMMER COMFORT 60-71-73 31 g 3



C-404 PARAISO 109 140 g 2



C-605 YUCATAN 91

275 g 6 



C-14 FAIR COTTON MARINER 204
+ FAIR COTTON 39

400 g 2  + 3 

Contraportada/Quatrième de couverture/Back Cover/
Rückseite/Achterpagina/Quarta di copertina



N.109 CASUAL



KP-409 MILOS 81

608 g 13 



C-410 PARAIISO 110

490 g 5 



C-808 EASY KNIT COTTON 9

827 g 9 



N.109 CASUAL



KP-700 PANAMA 84-3-60

597 g 12 



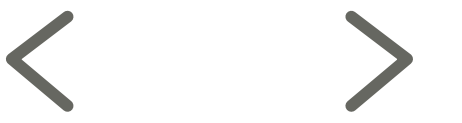
C-210 MILOS 80



238 g 5 



N.109 CASUAL



C-202 MENFIS COLOR 117

527 g 6



C-24 SWEET COCOON 94

315 g 7



C-811 SCUBY COTTON 106 2270 g 12 



C-809 SCUBY COTTON 100 1040 g 11 